



## ***USB 2.0 to 10/100Mbps Ethernet Adapter***

***UE-9521***

**User Manual**

## **Copyright**

Copyright © 2004 by PLANET Technology Corp. All rights reserved. No part of this publication may be reproduced, transmitted, transcribed, stored in a retrieval system, or translated into any language or computer language, in any form or by any means, electronic, mechanical, magnetic, optical, chemical, manual or otherwise, without the prior written permission of PLANET.

PLANET makes no representations or warranties, either expressed or implied, with respect to the contents hereof and specifically disclaims any warranties, merchantability or fitness for any particular purpose. Any software described in this manual is sold or licensed "as is". Should the programs prove defective following their purchase, the buyer (and not PLANET, its distributor, or its dealer) assumes the entire cost of all necessary servicing, repair, and any incidental or consequential damages resulting from any defect in the software. Further, PLANET reserves the right to revise this publication and to make changes from time to time in the contents hereof without obligation to notify any person of such revision or changes.

All brand and product names mentioned in this manual are trademarks and/or registered trademarks of their respective holders.

## **Federal Communication Commission Interference Statement**

This equipment has been tested and found to comply with the limits for a Class B digital device, pursuant to Part 15 of FCC Rules. These limits are designed to provide reasonable protection against harmful interference in a residential installation. This equipment generates, uses, and can radiate radio frequency energy and, if not installed and used in accordance with the instructions, may cause harmful interference to radio communications. However, there is no guarantee that interference will not occur in a particular installation. If this equipment does cause harmful interference to radio or television reception, which can be determined by turning the equipment off and on, the user is encouraged to try to correct the interference by one or more of the following measures:

1. Reorient or relocate the receiving antenna.
2. Increase the separation between the equipment and receiver.
3. Connect the equipment into an outlet on a circuit different from that to which the receiver is connected.
4. Consult the dealer or an experienced radio technician for help.

## **FCC Caution**

To assure continued compliance. (example-use only shielded interface cables when connecting to computer or peripheral devices). Any changes or modifications not expressly approved by the party responsible for compliance could void the user's authority to operate the equipment.

This device complies with Part 15 of the FCC Rules. Operation is subject to the Following two conditions: ( 1 ) This device may not cause harmful interference, and ( 2 ) this Device must accept any interference received, including interference that may cause undesired operation.

## **Safety**

This equipment is designed with the utmost care for the safety of those who install and use it. However, special attention must be paid to the dangers of electric shock and static electricity when working with electrical equipment. All guidelines of this and of the computer manufacture must therefore be allowed at all times to ensure the safe use of the equipment.

## **Revision**

User's Manual for PLANET USB2.0 to Fast Ethernet Adapter

Model: UE-9521

Rev: 1.0 (December, 2004)

Part No. EM-UE9521

# Table of Contents

<b>CHAPTER 1</b>	<b>INTRODUCTION .....</b>	<b>1</b>
1.1	FEATURES .....	1
1.2	SPECIFICATION.....	2
1.3	PACKAGE CONTENTS .....	2
1.4	MINIMUM SYSTEM REQUIREMENTS.....	2
<b>CHAPTER 2</b>	<b>INSTALLATION PROCEDURE .....</b>	<b>3</b>
2.1	WINDOWS 98/ME/2000 DRIVER INSTALLATION.....	3
2.2	WINDOWS XP DRIVER INSTALLATION .....	7
<b>APPENDIX A</b>	<b>FAQ.....</b>	<b>9</b>

# Chapter 1 Introduction

Thanks you for purchasing our UE-9521. This guide is to provide the installation and usage of this adapter for network installers and users.

The USB2.0 Fast Ethernet Adapter provides a convenient and cost-effective way of connect the notebook or desktop PCs to an IEEE 802.3/802.3u standard Fast Ethernet network through the Universal Serial Bus (USB) interface. This is designed for both Notebook and Desktop PC with USB2.0 or USB1.1 connector and operating system supported. With the new interface USB2.0, it can increase bandwidth up to 480Mbps for the device it connected. It makes the USB network adapter truly work in 100Mbps network, not only 12Mbps of the USB1.1 limitation. Full/Half duplex operation mode is auto-detected. With transmission and reception taking place simultaneously, data transfer is double. Using UE-9521, you can simplify your Network connections at home, office and even on the road.

This adapter can work with Windows 98/Me/2000/XP. Whatever your requirements are ease of installation, superior performance or responsive support backed up by unlimited technical support, this adapter is the superior choice.

## 1.1 Features

- USB specification 2.0 and 1.1 compliant
- Bandwidth up to 480Mbps
- Complies with IEEE 802.3 10Base-T and 802.3u 100Base-TX standards
- Provides Full-Duplex Ethernet operation for both 10Base-T and 100Base-TX expand the bandwidth up to 20/200Mbps
- With one Type A upstream port to connect USB hub or PC with USB port
- Bus powered external power free
- Compact and robust design - perfect solution for all network users, both desktop and mobile
- Hot-Swap
- Plug and Play

## 1.2 Specification

Model	UE-9521
Network Standard	IEEE 802.3 10BaseT, IEEE 802.3u 100BaseTX
USB Standard	USB2.0 compliant
Data Transfer Rate	LAN: 10/20Mbps, 100/200Mbps USB2.0: 12/480Mbps
Connectors	One RJ-45 One USB Type A
LED indicators	3: LNK/ACT, FDX, 100M
Driver support	Windows 98/Me/2000/XP
Operation Environment	Temperature: 0~40 degree C (operating) Humidity: 10~95%, non-condensing
Power mode	Bus Powered
Power consumption	5V DC, 150mA max
Dimension (mm)	260 x 35 x 16 (W x D x H)
Weight	32g
Network Media	10Base-T: RJ-45 STP/UTP, Category 3~5 cable, 100meters maximum 100Base-TX: RJ-45 STP/UTP, Category 5 cable, 100meters maximum
Certification	FCC, CE

## 1.3 Package Contents

Before installation, please check the items of your package. The package should include the following items:

UE-9521	x 1
Drivers and User's Manual CD	x 1

***If any of the above items are missing, contact your supplier as soon as possible.***

## 1.4 Minimum System Requirements

Before installation, please check the following requirements with your equipment.

- Operating System: Windows 98/Me/2000/XP
- PC with CD-ROM drive
- USB port with standard 2.0 or 1.1

# Chapter 2 Installation Procedure

Before you proceed with the installation, it is necessary that you have enough information about the USB2.0 to Fast Ethernet Adapter. Use the Procedure described in below in this chapter to install under Windows 98/Me/2000/XP.

## 2.1 Windows 98/Me/2000 Driver Installation

*Note: The following installation operates under Window 2000. Procedures will be similar to Window 98/Me. About Windows XP driver installation, please refer to next section.*

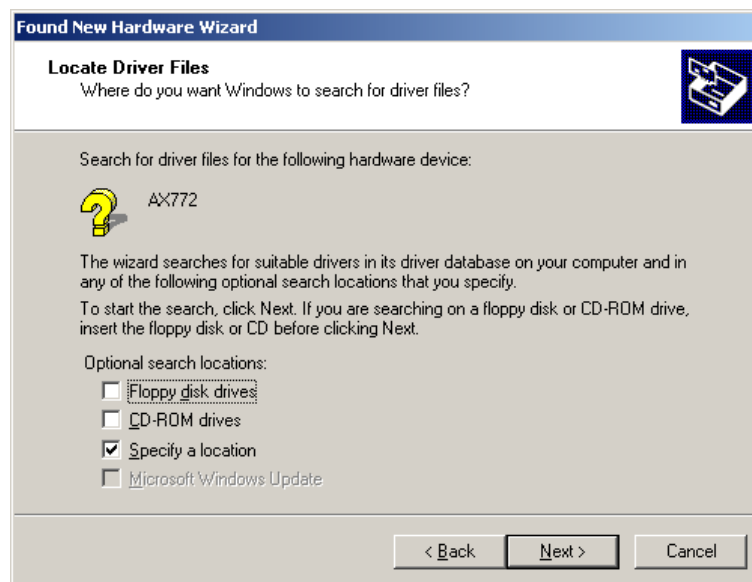
1. Plug UE-9521 into your PC's USB port.
2. Power on the PC and insert Driver and User's manual CD into CD-ROM drive.
3. Windows will automatically detect UE-9521 and ask you to install driver. Please click "Next".



4. Please select the first option and click "Next" to continue.

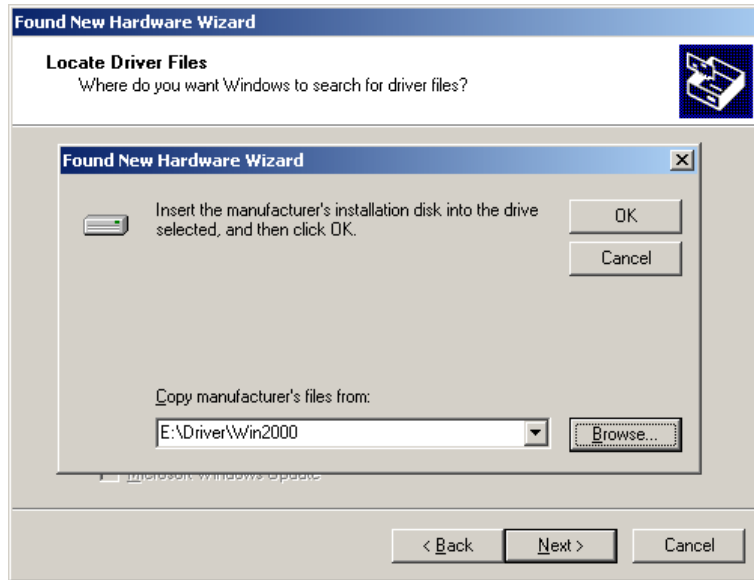


5. Select "Specify a location" and click "Next".

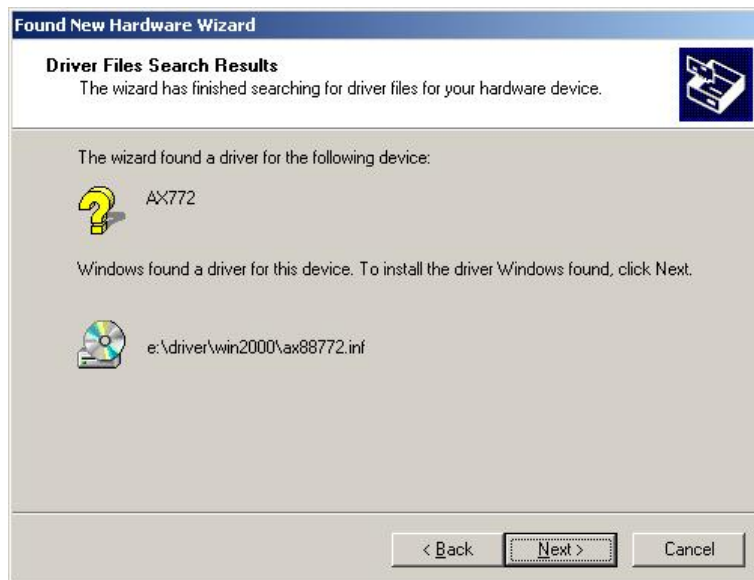




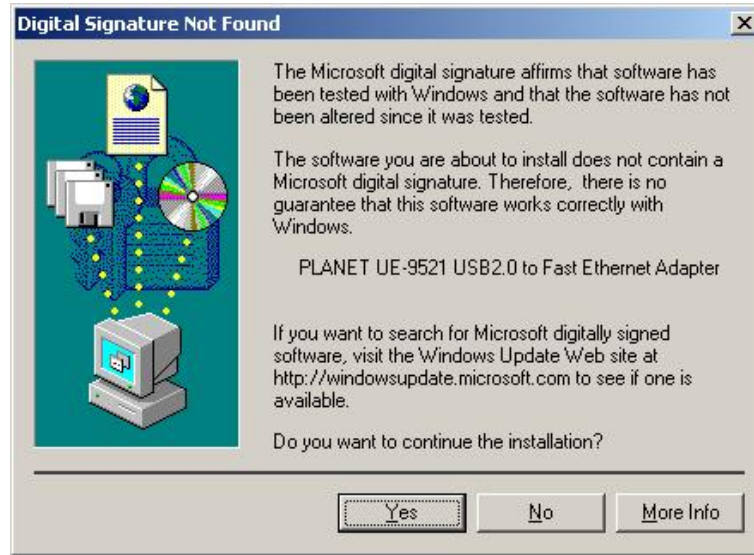
6. You can click "Browse" to find the driver location. (Assume "E" is your CD-ROM drive, the driver can be found in E:\Driver\Win2000). Please click "OK" to continue.



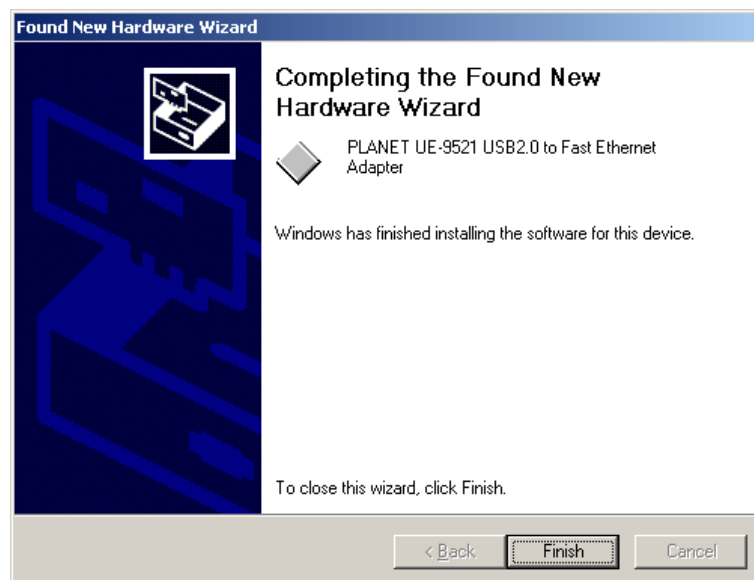
7. Windows will show this screen to prompt you that it found a driver for the device you are installing, please click "Next" to continue.



- Windows 2000 may tell you this driver doesn't contain Microsoft digital signature. Please don't worry about this, click "Yes" to continue the installation.



- Please click "Finish" to complete the driver installation.



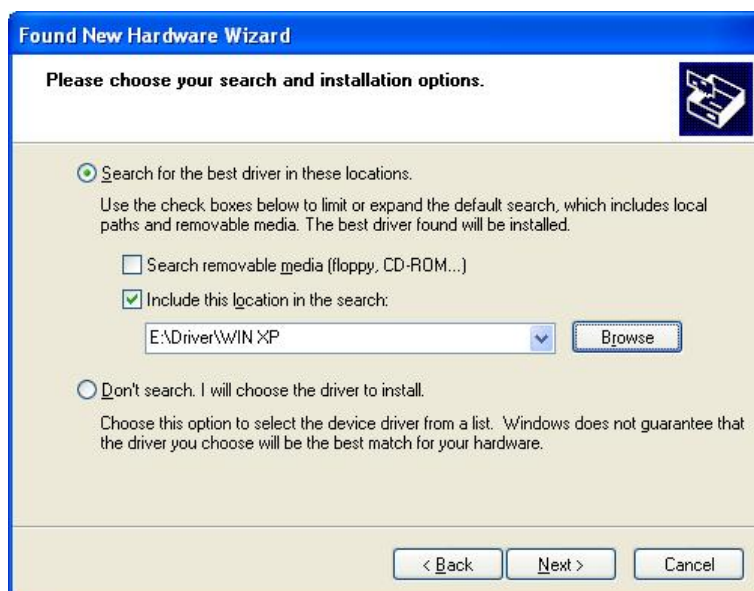
(For Win98/Me, Windows will ask you to restart your PC when driver installation finished.)

## 2.2 Windows XP driver installation

1. Plug UE-9521 into your PC's USB port.
2. Power on the PC and insert Drivers and User's manual CD into CD-ROM drive.
3. Windows XP will detect UE-9521 and ask you to install driver. Please select the second option and click "Next".



4. Please select "Include this location in the search" and then click "Browse" to find out UE-9521 driver location to install driver. (Assume "E" is your CD-ROM drive, you can find out UE-9521 driver in E:\Driver\WinXP). Please click "Next" to continue.



5. WinXP will show you this dialog box to prompt you the driver has not passed Windows logo testing, please press “Continue Anyway” to continue.



6. Please click “Finish” to complete the driver installation.



# Appendix A FAQ

**Q: What is USB?**

A: USB (Universal Serial Bus) is a “Plug and Play” interface between a computer and add-on devices (such as audio players, joysticks, keyboards, telephones, scanners and printers). With USB, a new device can be added to your computer without having to add an adapter card or even having to turn the computer off.

**Q: What is the maximum speed of USB 2.0?**

A: USB version 1.1 supports a data rate of 12 Mbps. The New USB 2.0 Supports a data rate up to 480 Mbps.

**Q: How long of a cable can I use to connect UE-9521?**

A: The USB specification limits the length of a cable between two devices to 5 meters. About the RJ-45 cable, the max length is 100m.

**Q: Why I cannot install UE-9521 into WinNT?**

A: WinNT is not support USB device, so you cannot install UE-9521 into WinNT system.

**Q: When UE-9521 connects to my PC, Windows will show me a message such as “a high speed USB device plug into a low speed USB device”, what is it mean?**

A: When Windows show this message, it is mean you connect UE-9521 into a USB 1.1 port. UE-9521 is a USB 2.0 device, when you connect USB2.0 device into a USB 1.1 port, Windows will show you the message to prompt you the USB 2.0 device will work as a USB 1.1 device.